



Replacing the Rimage Everest III™ Ribbons

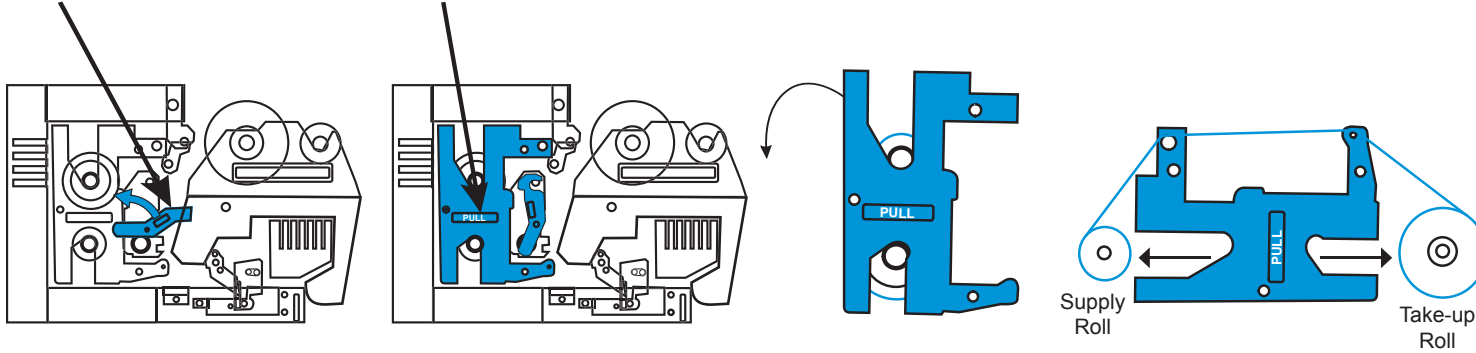
Remove the used print ribbon.

1. Turn **latch 1** counterclockwise.

2. Pull out the **print ribbon carrier**.

3. Lay the **print ribbon carrier** on its back.

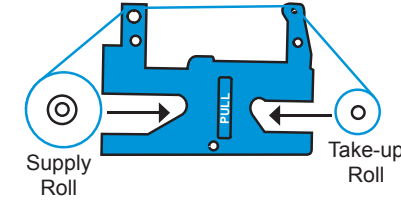
4. Remove the **print ribbon** from the print ribbon carrier.



Install the new print ribbon.

1. With the supply roll on the left side, put the **print ribbon** on the print ribbon carrier as shown.

! **Important!** Make sure the ribbon is straight and flat.



2. Insert the **print ribbon carrier** into the printer.

! **Note:** When properly installed the supply roll will be at the top of the carrier.

3. Turn **latch 1** clockwise to secure the print ribbon carrier.

! **Note:** After you load the new ribbon, you may need to adjust the density settings in the printer driver because ribbon color can vary from lot to lot. Refer to the *Everest User Guide* for additional information.

Remove the used retransfer ribbon.

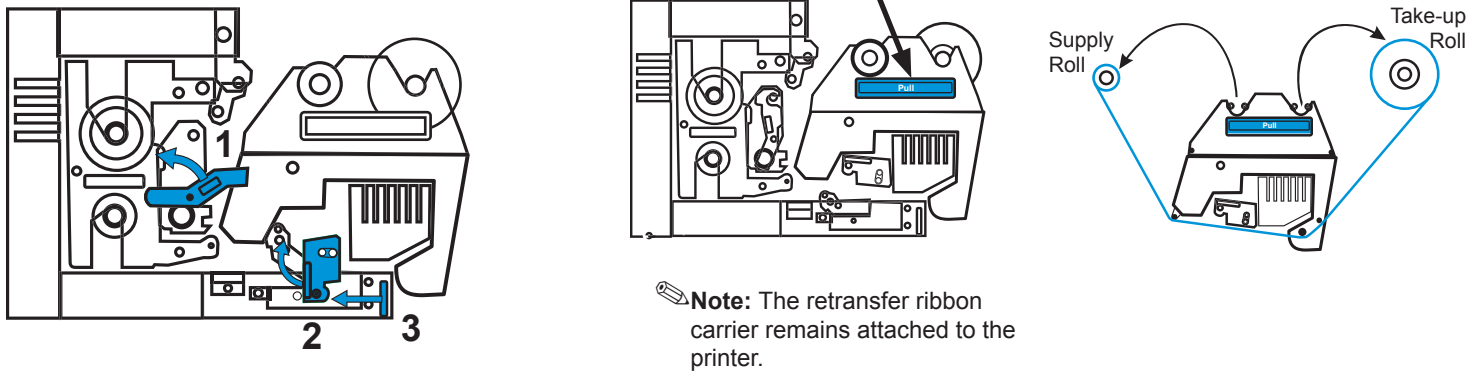
1. Turn **latch 1** counterclockwise.

2. Turn **latch 2** clockwise.

3. Slide **latch 3** to the left.

4. Pull the **retransfer ribbon carrier** away from the printer.

5. Remove the **retransfer ribbon** from the retransfer ribbon carrier.



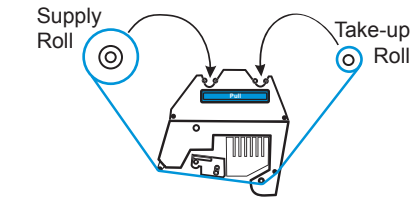
Install the new retransfer ribbon.

1. Remove the new **retransfer ribbon** from its packaging.

2. Carefully unwind a few inches of **ribbon**.



3. With the supply roll on the left, slide the **ribbon** under the ribbon carrier.



4. Snap the **rolls** into the ribbon carrier.

! **Important!** Make sure the ribbon is straight and flat.

5. Tighten the ribbon by turning the **take-up roller** (the roller on the right) counterclockwise.

6. Slide the **retransfer ribbon carrier** into the printer.

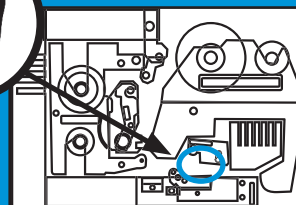
7. Close **latches 1, 2, and 3** to secure the retransfer ribbon carrier.



Warning! Hazardous moving parts!

Keep your fingers and other body parts away from the indicated area.

Do not reach into this area!



Everest III ribbons

You must use ribbons compatible with the Everest III printer.

For more information on ribbon compatibility and replacement, refer to the user guide included with your Everest III printer or visit www.rimage.com.