

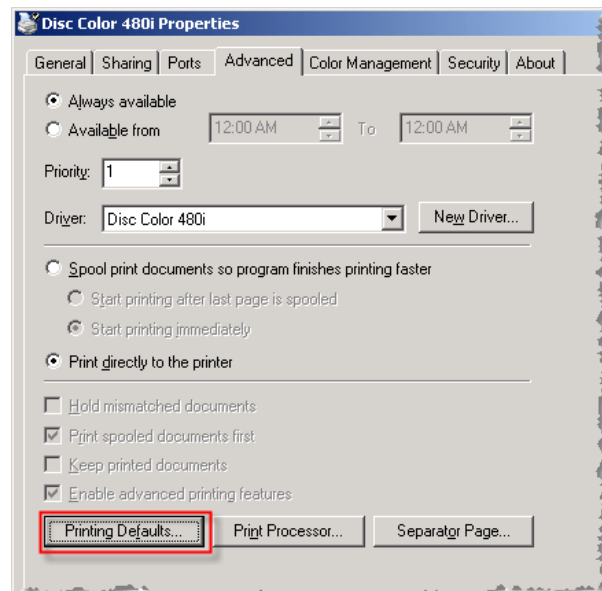
Changing the Hub Printable Area

Use this document to enable printing the hub area without a hub ring. You can use either CD Designer or an Acrobat (.PDF) file to print discs. Select the appropriate directions to change the hub printable area.

Printing PDF Files

When printing with Acrobat (.PDF) files, change the *Printing Preferences* in the printer driver is all that is required.

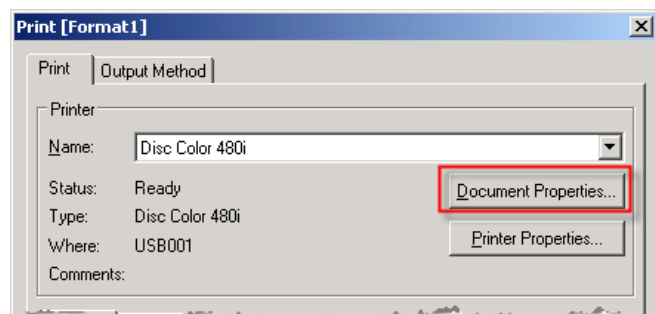
1. From the Windows **Start** menu select: **Settings > Printers and Faxes**, or **Control Panel > Devices and Printers**.
2. Right-click on the **Disc Color Printer 480i** and select **Properties** from the drop-down menu. The *Disc Color Printer 480i Properties* window opens.
3. Select the **Advanced** tab.
4. Select **Printing Defaults**.
5. Go to the *Changing settings for printing on hub* section on page 2.



Printing Labels from CD Designer

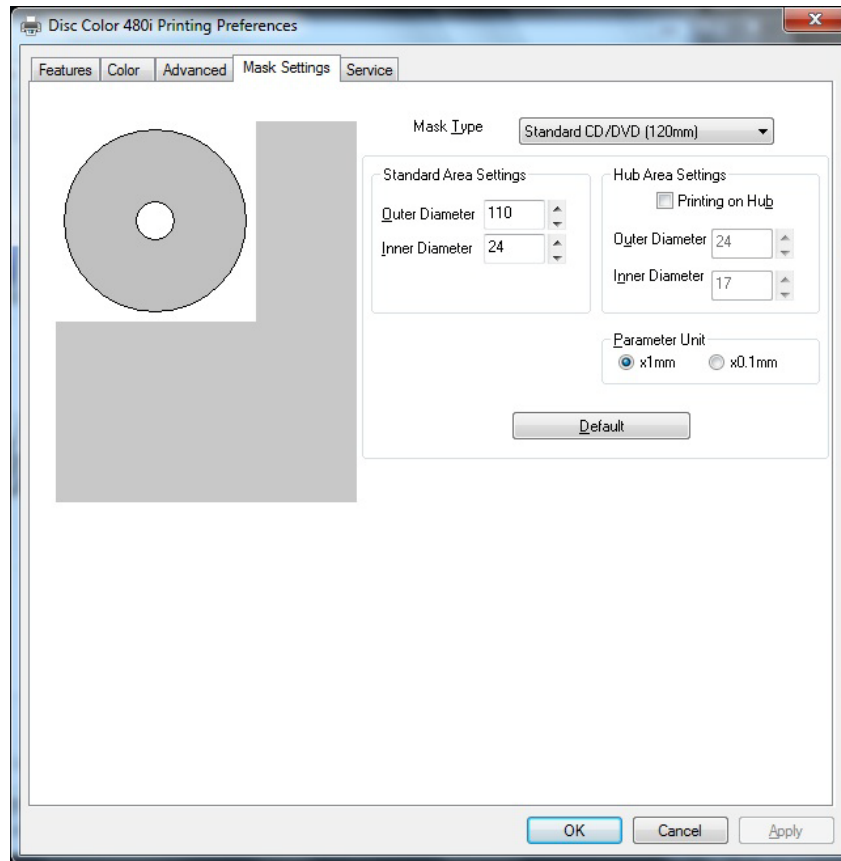
Note: Using this method, printing preferences are saved with the label file and are used instead of the printer driver settings.

1. Open the label file with CD Designer.
2. Select **Print**.
3. Select the **Document Properties** button.
4. Go to the *Changing settings for printing on hub* section on page 2.



Changing Settings for Printing on Hub

1. Select the **Mask Settings** tab.
2. Select the **Printing on Hub** option.



3. Measure the inner diameter of the printable surface.
4. In the *Hub Area Settings*, change the **Outer Diameter** and **Inner Diameter** settings to the value measured in step 3 before changing any other diameter settings.

Note: Rimage recommends that you set the Inner Diameter so that it is 1 mm greater than the actual measurement to prevent the ink from smearing. The inner diameter on Rimage media is 23 mm. [Change the Inner Diameter field to 24 mm.](#)

5. In the *Standard Area Settings*, change the **Inner Diameter** to the same value used in step 4.
6. After these changes are made, select **Apply**.
7. To close the *Printing Preferences*, select **OK**.
8. If you print with CD Designer, save the label to save the printer settings.

Tip: If all your discs are to be printed on the hub, change the default label template by opening the *Rimage.btw* file and change the same print settings.