



Update Firmware for the Rimage Everest™ II Printer

The procedure in this document explains how to update the firmware on the Rimage Everest II printer. Firmware updates keep your printer running at peak performance. Updates can be performed from the Control Center (PC) on which the Everest II printer is installed.

 **Note:** Unless otherwise indicated, all Windows navigation statements in this document are Windows XP paths. Windows 2000 and Windows Vista paths may differ slightly.

Update Procedure for Rimage Everest II Printer

1. Download the latest firmware version at www.rimage.com/support.
 - a. From the **Support** menu select: **Printer Series > Everest II > Software, Firmware & Service Packs** tab.

 **Note:** The latest firmware versions are listed under the **Firmware** heading.
 - b. At the control center, create a **new folder** labeled *Updated Firmware* on the C:\ drive.
 - c. From the **Software, Firmware & Service Packs** tab, select the **link** to the latest firmware version. The *Firmware Download* page displays.
 - d. Select the **Download Now** button.
 - e. Accept the **Rimage Firmware License Agreement**. The *File Download* dialog box displays.
 - f. Save the **.zip file** to the C:\Updated Firmware folder that you created in step a.

Everest II Support



At Rimage, we know how important support is to our users.

We strive to provide you with as much information as possible to set up, use and troubleshoot your autoloaders and printers. From here you can download software, service packs, and firmware, as well as view our award winning user documentation and service information. Select a tab below to learn more.

End of Service for some Everest II Printers

Software, Firmware & Service Packs | **User Manuals** | Repair | Service

Select a link below for more information on downloading the latest software, service pack, or firmware for your product. From the access release notes and download instructions.

Important! Before downloading any type of software:

- » Follow your organization's upgrade policies and procedures.
- » Ensure prior system backup to allow from recovery, should any problems arise, and perform a system test before full implement
- » If your Rimage system is part of an integrated solution, contact your solution provider to ensure your software version is consistent with hardware components of the system.

Firmware	Version	Date
Everest II Printer	v. 2.60	March 1, 2008
Service Packs	Version	Date
None Available	-	-





PRODUCTS

Home » Support » Printer Series » Everest II

Everest II Printer v. 0498J 2.60 Firmware

File Size: 293 KB
Version: 0498J 2.60
Publish Date: 03/01/2008

-  Release Notes
-  Installation Instructions

Download Now

Description

This firmware can be loaded on autoloaders or AutoPrinters using an Everest II print


2. Prepare the Everest II printer for the firmware update.

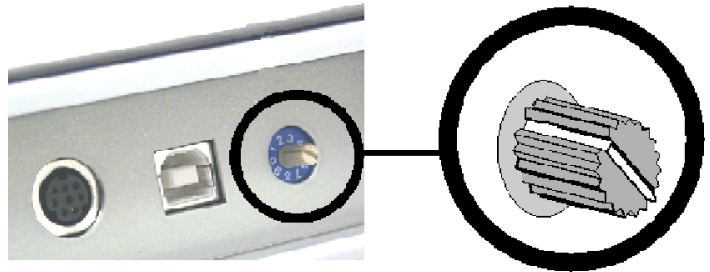
 **Important!** If you are updating multiple Everest printers, update only one printer at a time.

- a. Close any **open applications** on the PC.
- b. Remove the **power cord** from the Everest printer. The Everest printer powers down.
- c. At the back of the Everest printer, note the current **mode switch position**.


 **Note:** You will need to change the mode switch back to this position when the firmware update is complete.

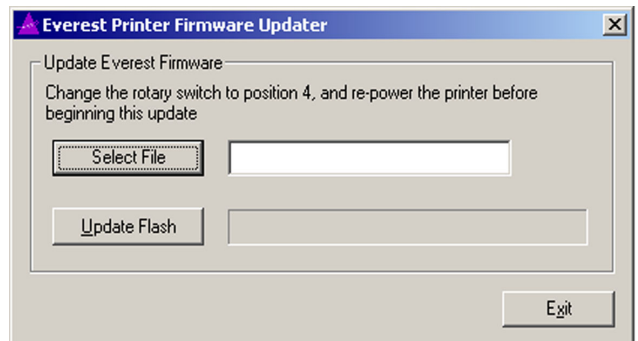
d. Change the **mode switch** to position 4 (firmware update mode).

 **Tip:** A flat blade screwdriver may be used to turn the mode switch.



3. Update the Everest II printer with the latest firmware version.

- a. Reattach the **power cord** to the Everest printer. The Everest printer powers on.
- b. At the control center select: **C: > Program Files > Rimage > Utilities > EvUpdate.exe** . The *Everest Printer Firmware Updater* dialog box displays

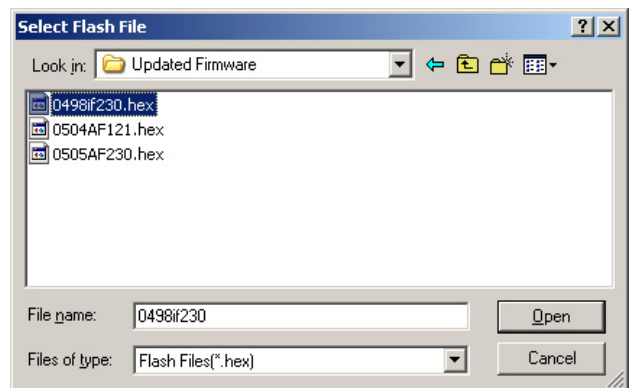


c. Select the **Select File** button. The *Select Flash File* dialog box displays.

d. Browse to the **firmware file** in the *C:\Updated Firmware* folder.

 **Note:** The file will have a **.hex** extension.

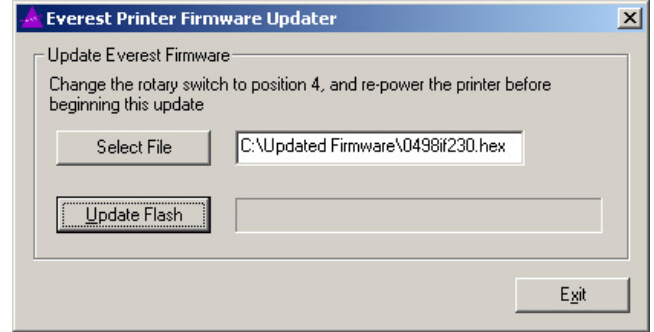
e. Select **Open**. The firmware file displays in the **Select File** field in the *Everest Printer Firmware Updater* dialog box.



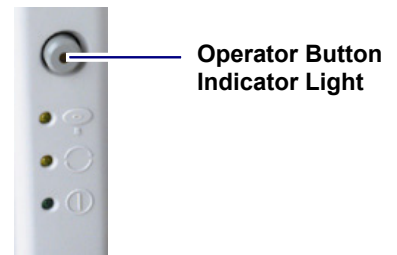
- f. Select **Update Flash**. The firmware update process begins.

 **Notes:**

- During the update process, a status bar displays in the **Update Flash** field and the printer's indicator lights blink. The update process may take a few minutes.
- When the update process is complete, an *EvUpdate* message box displays and the printer's operator button indicator light blinks.



- g. Select **OK** to close the message box.
- h. Select **Exit** on the *Everest Printer Firmware Updater* dialog box. The dialog box closes.



4. Prepare the Everest printer for use.
- Remove the **power cord** from the Everest printer.
 - Change the **mode switch** back to its original position. Refer to step 2.
 - Reattach the **power cord** to the Everest printer. The Everest printer powers on.

The Everest II firmware update is complete.

Update Firmware for the Rimage Everest™ III and Everest™ 600 Printer


The procedure in this document explains how to update the firmware on the Rimage Everest III and Everest 600 printer. Firmware updates keep your printer running at peak performance. Updates can be performed on the external or embedded Control Center (PC) using Rimage System Manager or the Everest Updater utility.

 **Notes:**

- Rimage System Manager can be used to update the firmware for both the Everest III and the Everest 600 printers. The Everest Updater Utility is also available for standalone Everest printers.
- Unless otherwise indicated, all Windows navigation statements in this document are Windows XP paths. Other Windows paths may differ slightly.

Procedure for Producer Software Suite Version 7.2 and Higher

1. Check your current firmware version.

- Select  from the desktop. Rimage System Manager opens.
- From the **Messaging Server** dropdown list, select the appropriate **Messaging Server**.

 **Tip:** The default is **This Computer**.

- Select **OK**. The *Control Centers* window displays.
- Locate the **current printer firmware version**.

 **Note:** The current firmware version is located before the printer serial number as shown.



2. Locate the latest firmware version at www.rimage.com/support.
 - a. From the **Support** menu select: **Printer Series > Your Product > Software, Firmware & Service Packs** tab.

 **Note:** The latest firmware versions are listed under the Firmware heading.

- b. If the firmware version on the **Software, Firmware & Service Packs** tab is newer than your printer's current version, download the firmware. Refer to **step 2**.

If the firmware version listed is the same as your printer's current version, no further action is needed. Periodically check the Rimage Support site for firmware version updates.

Everest III Support



At Rimage, we know how important support is to our users.

We strive to provide you with as much information as possible to set up, use and troubleshoot your autoloaders and printers. From here you can download software, service packs, and firmware, as well as view our award winning user documentation and service information. Select a tab below to learn more.

- Software, Firmware & Service Packs
- User Manuals
- Repair
- Service

Select a link below for more information on downloading the latest software, service pack, or firmware for your product. For access release notes and download instructions.

Important! Before downloading any type of software:

- » Follow your organization's upgrade policies and procedures.
- » Ensure prior system backup to allow from recovery, should any problems arise, and perform a system test before full install.
- » If your Rimage system is part of an integrated solution, contact your solution provider to ensure your software version is compatible with the hardware components of the system.



Firmware	Version	Date
Everest III Printer	v. 0504A_1.21	August 12, 2008

Service Packs	Version	Date
None Available	-	-

Software	Version	Date
CD Designer Software Suite	v. 8.10	February, 2009


3. Download the latest firmware version.
 - a. At the PC, create a **new folder** on the C:\ drive labeled *Updated Firmware*.
 - b. From the **Software, Firmware & Service Packs** tab, select the **link** to the latest firmware version. The *Firmware Download* page displays.
 - c. Select the **Download Now** button.
 - d. Accept the **End User License Agreement**. The *File Download* dialog box displays.
 - e. Save the **.zip file** to the C:*Updated Firmware* folder that you created in step 2a.

The screenshot shows the Rimage website interface. At the top right is the Rimage logo and a 'PRODUCTS' button. Below is a breadcrumb trail: Home » Support » Printer Series » Everest III. The main heading is 'Everest III v. 0504A_1.21 Firmware'. Below this, the following information is displayed: File Size: 301 KB, Version: 0504A_1.21, Publish Date: 08/12/2008. There are two links: 'Release Notes' and 'Installation Instructions'. A prominent 'Download Now' button is visible. Under the heading 'Description', it states: 'This firmware can be loaded on autoloaders or AutoPrinter using an Everest III'.

4. Update the Everest printer with the latest firmware version.
 - a. From the left panel of Rimage System Manager, select . The right panel displays Production Server information.
 - b. Select . Production Server pauses.
 - c. Repeat **steps a – b** for each Production Server as needed.
 - d. From the **Control Center** menu select **Update Printer Firmware**.

 **Note:** If the *Found New Hardware Wizard* displays:

- **Everest III printer:** Select **Next** to advance through each *Wizard* window, then continue to **step e**.
 - **Everest 600 printer:** The *Wizard* window displays, but the firmware update continues. Select **Cancel** to close the *Wizard* window, then continue to **step e**.
- e. Browse to and select the **firmware file** in the *C:\Updated Firmware* folder.

 **Note:** The file will have a **.hex** extension.
 - f. Select **OK**. The program runs and the printer is updated.


5. Select  for each paused Production Server. Production Server starts.

 **Note:** Make sure you wait until the firmware update is complete before you select . The update may take a few minutes.

The firmware update is complete.

Procedure for the Everest Updater Utility


1. Locate the latest firmware at www.rimage.com/support.
 - a. From the **Support** menu select: **Printer Series > Everest III > Software, Firmware & Service Packs** tab.

 **Note:** All of the latest firmware versions are listed under the **Firmware** heading.
 - b. If the firmware version on the **Software, Firmware & Service Packs** tab is newer than your current version, download the firmware. Refer to **step 2**.

If the firmware version listed is the same as your printer's current version, no further action is needed. Periodically check the Rimage Support site for firmware version updates.
2. Download the latest firmware version. Refer to the image on page 2.
 - a. At the PC, create a **new folder** on the C:\ drive labeled *Updated Firmware*.
 - b. From the **Software, Firmware & Service Packs** tab, select the **link** to the latest firmware version. The *Firmware Download* page displays.
 - c. Select the **Download Now** button.
 - d. Accept the **End User License Agreement**. The *File Download* dialog box displays.
 - e. Save the **.zip file** to the *C:\Updated Firmware* folder that you created in step 2a.

3. Update the Everest printer with the latest firmware version.

 **Important!** If you are updating multiple Everest printers, update only one printer at a time.

 **Tip:** If the Everest Printer Updater Utility is not already installed on the PC, download the utility from www.rimage.com/support. From the **Support** menu select: **Printer Series > Everest III > Software, Firmware & Service Packs tab > Everest III Firmware Updater** link or **Printer Series > Everest 600 > Software, Firmware & Service Packs tab > Everest 600 Firmware Updater**.

a. Close any **open applications** on the PC.

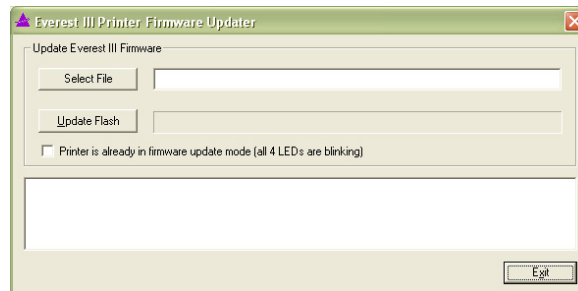
b. At the control center open the updater utility:

- **Everest III** – Select **C: > Program Files > Rimage > Utilities >  Ev3Updater.exe**.
- **Everest 600** - Select **C: > Program Files > Rimage > Utilities >  Ev3+Updater.exe**.

The *Everest Printer Firmware Updater* dialog box displays.

 **Important!**

- If the four indicator lights on the Everest III control panel are blinking, or if you have manually changed the mode switch to position 4 and restarted the printer, the printer is already in firmware update mode. Select the **Printer is already in firmware update mode** checkbox.
- If the four indicator lights are not blinking, and if you did not manually change the mode switch, do not select the checkbox. The Updater utility will change the printer to firmware update mode internally.

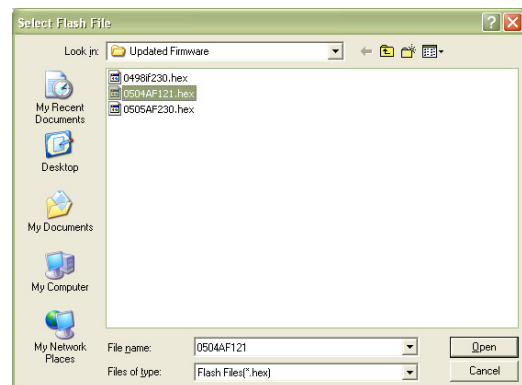


c. Select the **Select File** button. The *Select Flash File* dialog box displays.

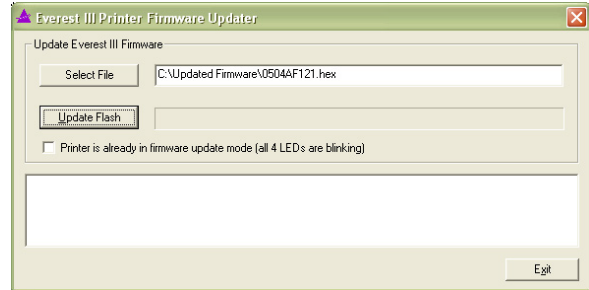
d. Browse to the **firmware file** in the *C:\Updated Firmware* folder.

 **Note:** The file will have a **.hex** extension.

e. Select **Open**. The firmware file displays in the **Select File** field on the *Everest III Printer Firmware Updater* dialog box.

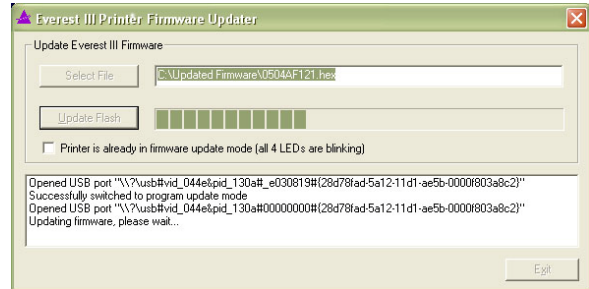


- f. Select **Update Flash**. The firmware update process begins.

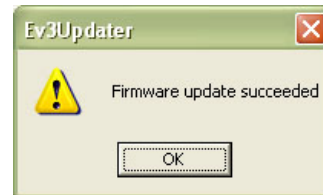


 **Notes:**

- During the update process, a status bar displays in the **Update Flash** field and the printer's indicator lights blink. The update process may take a few minutes.
- When the update process is complete, an *EvUpdater* message that the firmware update succeeded displays.



- g. Select **OK** to close the message box.
- h. Select **Exit** on the *Everest III Printer Firmware Updater* dialog box. The dialog box closes.



 **Important!**

- If you manually changed the mode switch to position 4 before beginning the firmware update process, or if you selected the **Printer is already in firmware update mode** checkbox in step b, the printer's four indicator lights blink. Change the mode switch to the original position and restart the Everest III.
- If you did not manually change the mode switch or select the checkbox in step c, the Everest III is ready for use.

The Everest firmware update is complete.