

# RIMAGE SOFTWARE SUITE

## At the Heart of Every Rimage System

Rimage Software Suite is the powerful brain behind automated disc creation. From custom-designed direct-to-disc printing to system monitoring and unique workflow integration, Rimage software drives performance, productivity and reliability—providing everything you need for fully-integrated content creation and distribution.

## Benefits

### Quick and easy disc production

Prepare, submit and monitor jobs from any PC or web-based computer on the network. Preparing discs for production is a straightforward 5-step process and the Rimage Wizard walks you through each step.

### Professional design

Create, import and customize professional graphics to be printed directly on the surface of your disc. The simple click-and-drag user interface lets you add a variety of elements—add background colors, logos, custom text, photos, mail-merge data and barcodes.

### Convenient system monitoring

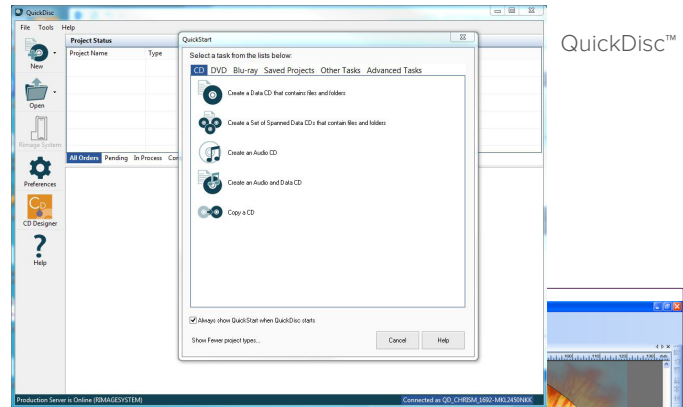
Fully control and monitor all Rimage systems from any location on your network. View the status of your jobs, get accurate disc and media volume status, and control functionality from anywhere you have network access.

### Easy system integration and networking

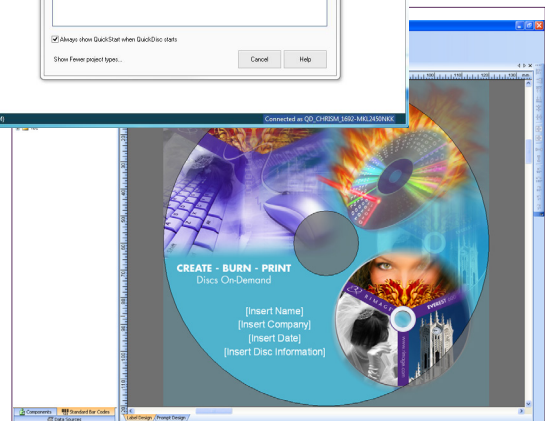
Bring real solutions to life. Whatever your needs and however complex your operations, Rimage's powerful API and SDK can integrate your disc publishing system with your workflow to dramatically reduce development time and money, and streamline multiple tasks.

## Features

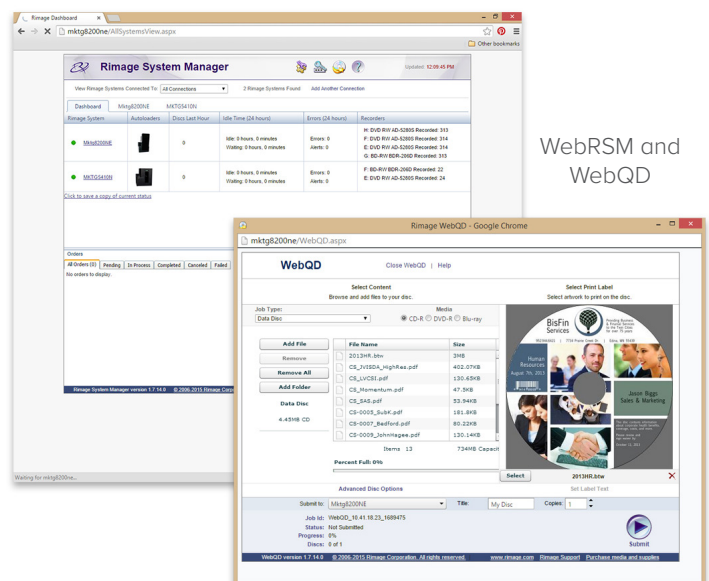
- Quick and easy custom label design
- CD/DVD/Blu-ray Disc™ recording and printing
- System integration and networking



QuickDisc™



Rimage CD Designer™



WebRSM and WebQD

## QuickDisc™ & WebQD™

You can prepare, submit and monitor jobs from any PC or web-based computer on the network. The Rimage Wizard walks you through each step. With WebQD, the companion web-based application, all you need is the system address, a PDF, .btw, or .jpg artwork file, and your disc content to publish a disc from any workstation or web browser.

- Prepare, submit, and monitor discs for recording and printing
- Save jobs for easy resubmission
- Includes easy-to-use drag-and-drop user interface
- Enables system monitoring with RSM or WebRSM
- Supports CD/DVD/Blu-ray Disc™ printing and recording
- Standard with all Rimage systems

## RSM & WebRSM™

Rimage System Manager (RSM) and the web-based application, WebRSM, enable you to view the status of your jobs, get accurate disc and media counts, and control functionality of all Rimage systems from any location on your network.

- Provides access to system level preferences, queuing and priority options and other global system management controls
- Controls multiple Rimage disc publishers distributed throughout the entire network
- Runs from anywhere with network access
- Includes full range of system protections, permissions and preferences
- Standard with all Rimage systems

## CD Designer™

CD Designer is an easy-to-use application for creating, importing and customizing graphics to be printed on optical discs. The simple click-and-drag user interface lets you add a variety of elements to fully customize your disc printing and fulfill your business requirements.

- Simple drag-and-drop operation
- Add graphics, objects and photos from almost any source
- Import multiple file types
- Includes examples and templates for easy disc design
- Supports mail merge options from external data files
- Supports 20+ types of bar codes
- Standard with all Rimage systems

## Rimage Software Development Kit (SDK)

Rimage's robust Software Development Kit (SDK) and application programming interface (API) can bring real solutions to life. Whatever your needs and however complex your operations, the Rimage SDK provides a seamless integration to any end-user application. SDK includes all APIs and information needed to create custom applications. With SDK, realize dramatic reductions in development time and money, and streamline multiple tasks into one automated process.

### SDK Features

- Reduce complex job submission processes to simple, routine commands that run automatically
- Automate and link processes of data set creation and disc artwork creation to your corporate systems
- Save any project consisting of a data set and the artwork to be printed on the disc and re-run at any time
- Automatically integrate photos, bar codes, dates, times, text fields, and metadata into artwork for printing
- Available upon request, at no additional charge

### API Features

- Simplifies integration of end-user applications with the Rimage system
- Enables application developers to create custom end-user disc publishing solutions
- Encapsulates the Client API into an easier-to-use interface that reduces integration time